

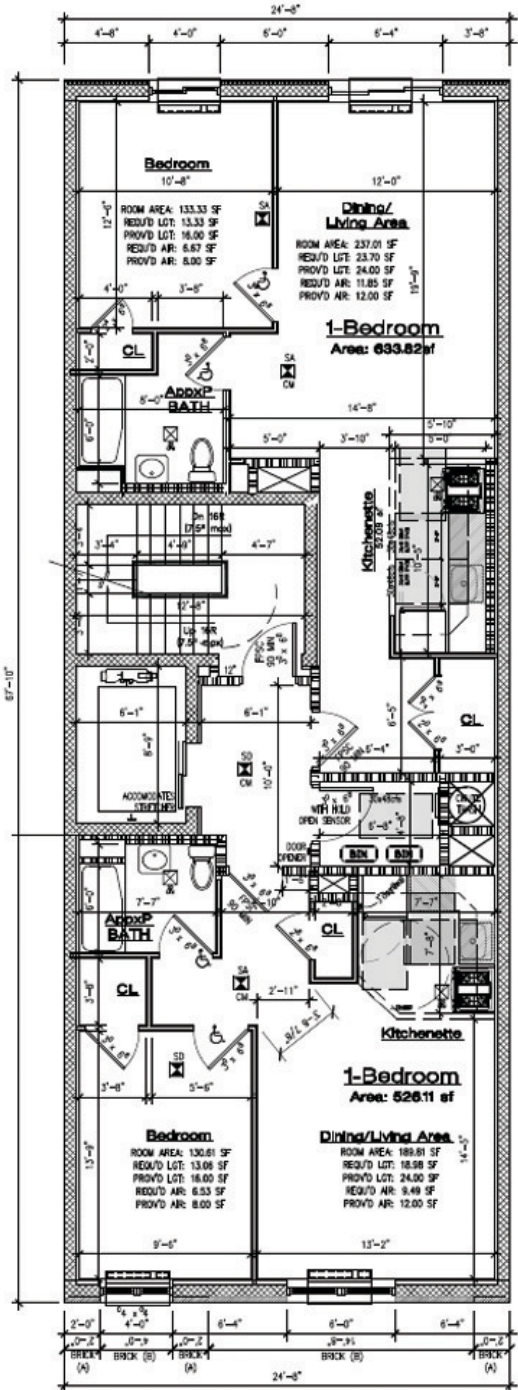
2nd Floor Plan  
SCALE: 1/8"=1'-0"

NOTES APPLYING TO THE MOBILE IMPAIRED UNIT:  
-ENTIRE SPACE IS TO BE FULLY EQUIPPED AND FUNCTIONING HANDICAP ACCESSIBLE UNIT FOR IMMEDIATE USE  
-ALL ELEMENTS OF THE STORY TO MEET HANDICAP REQUIREMENTS AND MOUNTING HEIGHTS FOR USABLE UNITS, INCLUDING BUT NOT LIMITED TO OPERATING HANDLES, DOOR KNOBS, WINDOW OPERATING HANDLES, GRAB BARS, SWITCHES, THERMOSTAT, INTERCOM, TELEPHONE, ETC.

NOTES APPLYING TO THE SENSORY/COGNITIVE IMPAIRED UNIT:  
-ENTIRE UNIT IS TO BE FULLY EQUIPPED AND FUNCTIONING FOR IMMEDIATE USE  
-SMOKE AND CARBON MONOXIDE DETECTORS TO BE INTERCONNECTED WITH COMBINATION STROBE/SIREN DEVICES TO ALERT OCCUPANTS OF AN EMERGENCY. SUCH DEVICES SHALL BE INSTALLED IN EVERY ROOM OF THE BUILDING, INCLUDING BATHROOMS.  
-INTERCOM PANEL AT FRONT DOOR AND MTRN UNIT TO HAVE BRILLE MARKINGS  
-ALL OTHER ELEMENTS OF THE STORY TO MEET HANDICAP REQUIREMENTS AND MOUNTING HEIGHTS FOR USABLE UNITS, INCLUDING BUT NOT LIMITED TO OPERATING HANDLES, DOOR KNOBS, WINDOW OPERATING HANDLES, GRAB BARS, SWITCHES, THERMOSTAT, INTERCOM, TELEPHONE, ETC.

LEGEND

- INDICATES 30" WIDE ENTIRE DROP-DOWN PORTION OF KITCHEN COUNTERTOP.
- INDICATES 30" WIDE DROP-DOWN PORTION OF KITCHEN COUNTERTOP TO BE PROVIDED.
- INDICATES T-TURN WITH DIMENSIONS AS PER ANSI A117.1 FIGURE 304.3(b).
- INDICATES 6" RADIUS WITH DIMENSIONS AS PER ANSI A117.1 FIGURE 304.3(c).
- Approx. 1" BATH
- 5'x5'0" BATH
- STD NYC H/C BATHROOM COMPLIANT WITH APPENDIX P, 2014 NYC BC
- TYPE A H/C BATHROOM COMPLIANT WITH FHA AND SECTION 504.



3rd Through 5th Floor Plans  
SCALE: 1/8"=1'-0"