

2nd Floor Plan
SCALE: 1/8"=1'-0"

NOTES APPLICABLE TO THE MOBILITY IMPAIRED UNIT:

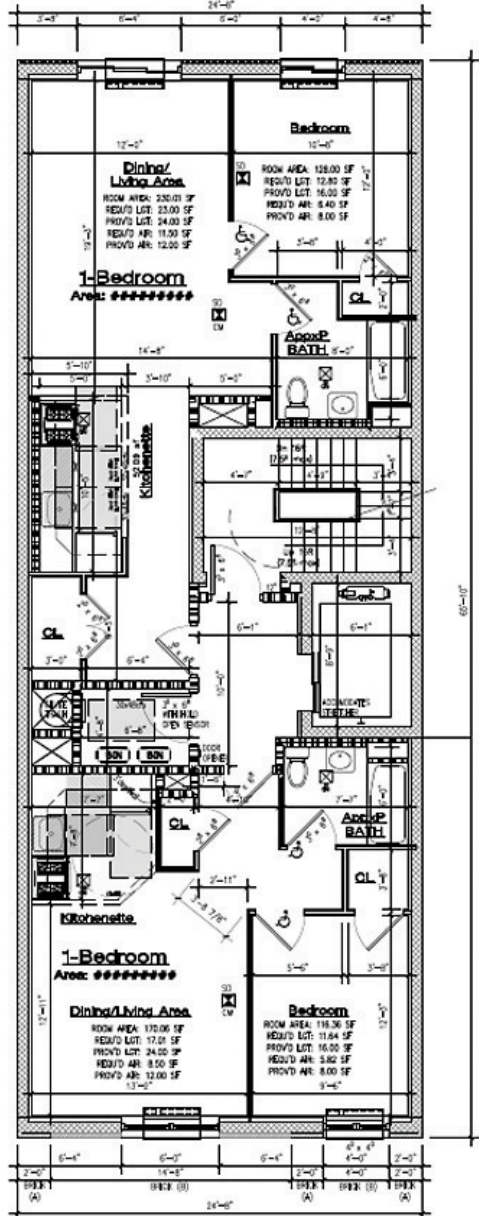
- THE SPACE IS TO BE FULLY EQUIPPED AND FUNCTIONING HANDED ACCESSIBLE UNIT FOR MOBILITY USE.
- ALL ELEMENTS OF THE UNIT TO MEET HANDED REQUIREMENTS AND MOUNTING HEIGHTS FOR USABLE LIFE, INCLUDING BUT NOT LIMITED TO: OPERATING HANDLES, DOOR RIVES, WINDOW OPERATING HANDLES, GRAB BARS, SWITCHES, THERMOSTAT, INTERCOM, TELEPHONE, ETC.

NOTES APPLICABLE TO THE VISUALLY IMPAIRED UNIT:

- THE UNIT IS TO BE FULLY EQUIPPED AND FUNCTIONING FOR INDEPENDENT USE.
- SMOKE AND CARBON MONOXIDE DETECTORS TO BE INTERCONNECTED WITH EXISTING OR NEW/NEWLY INSTALLED BY THE CONTRACTOR. IF AN EXISTING SMOKE (SIGNAL) SHALL BE INSTALLED IN EACH ROOM OF THE BUILDING INCLUDING PATIO/POOLS.
- MEDIUM PANEL AT FRONT DOOR AND WITH UNIT TO HAVE BRaille MARKINGS.
- ALL OTHER ELEMENTS OF THE UNIT TO MEET HANDED REQUIREMENTS AND MOUNTING HEIGHTS FOR ADAPTABLE UNIT, INCLUDING BUT NOT LIMITED TO: OPERATING HANDLES, DOOR RIVES, WINDOW OPERATING HANDLES, GRAB BARS, SWITCHES, THERMOSTAT, INTERCOM, TELEPHONE, ETC.

LEGEND

- INDICATES 30" VEE BULGE (DOWN-DOWN PORTION OF MOUNTING CONTROLS).
- INDICATES 30" VEE DOWN-DOWN PORTION OF MOUNTING CONTROLS TO BE PROVIDED.
- INDICATES 1-TURN WITH DIMENSIONS AS PER AREA ATTACHED (SEE 304.30).
- INDICATES 2-TURN WITH DIMENSIONS AS PER AREA ATTACHED (SEE 304.30).
- TYPE "A" BATH: ONE AND TWO BATHROOM COMPLIANT WITH AREA P. 204 AND DC.
- TYPE "B" BATH: ONE AND TWO BATHROOM COMPLIANT WITH AREA P. 204 AND DC.



3rd Through 5th Floor Plans
SCALE: 1/8"=1'-0"