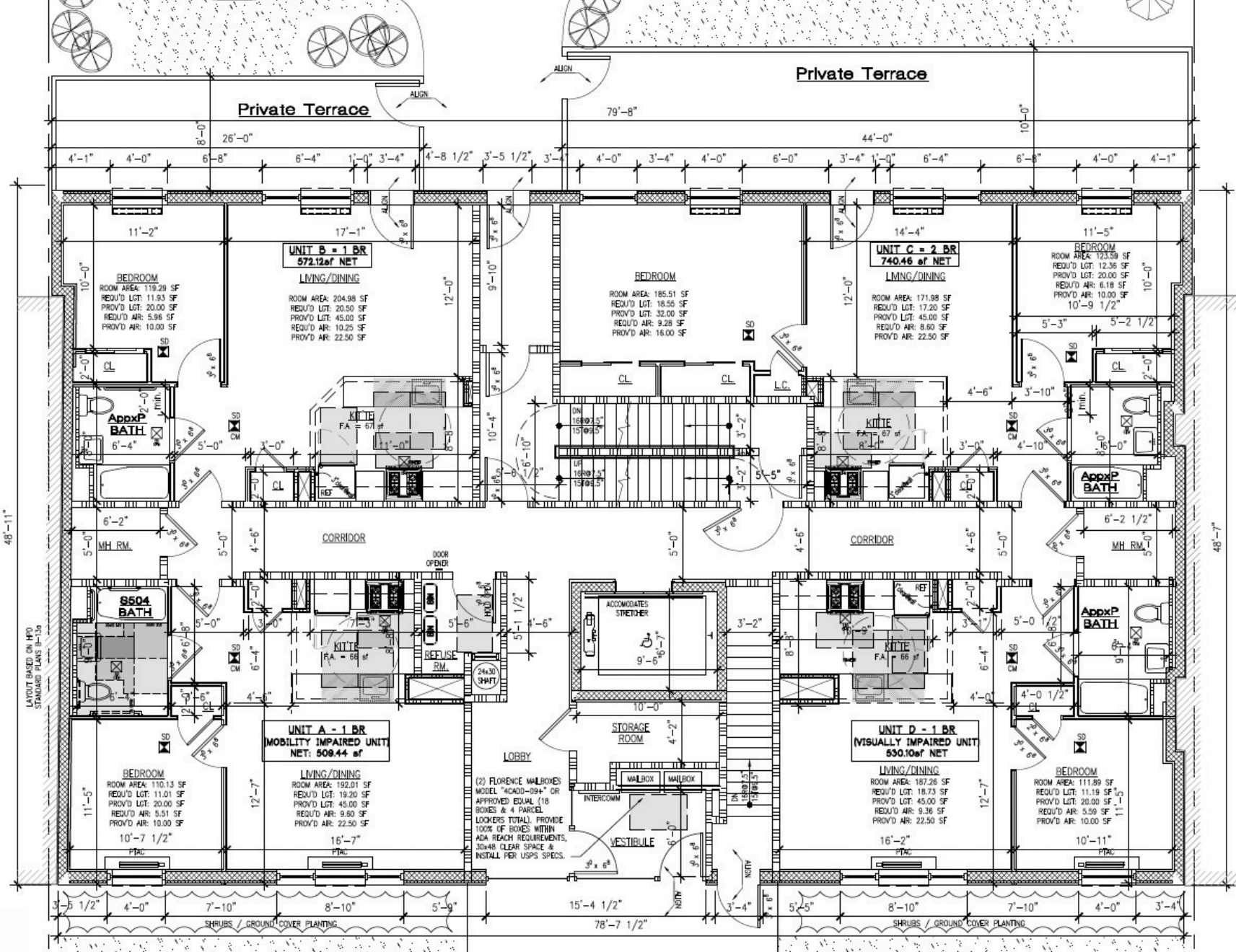


Private Terrace

Private Terrace



1ST FL. PLAN
SCALE 1/8" = 1'-0"

NOTES APPLYING TO THE AUDIO/VISUAL IMPAIRED UNIT.
 -ENTIRE UNIT IS TO BE FULLY EQUIPPED AND FUNCTIONING FOR IMMEDIATE USE
 -SMOKE AND CARBON MONOXIDE DETECTORS TO BE INTERCONNECTED WITH COMBINATION STROKE/SHEN DEVICES TO ALERT OCCUPANTS OF AN EMERGENCY. SUCH DEVICES SHALL BE INSTALLED IN EVERY ROOM OF THE DWELLING, INCLUDING BATHROOMS.
 -INTERCOM PANEL AT FRONT DOOR AND WITHIN UNIT TO HAVE BRAILLE MARKINGS.
 -ALL OTHER ELEMENTS OF THE STORY TO MEET HANDICAP REQUIREMENTS AND MOUNTING HEIGHTS FOR ADAPTABLE UNITS, INCLUDING BUT NOT LIMITED TO OPERATING HANDLES, DOOR KNOBS, WINDOW OPERATING HANDLES, GRAB BARS, SWITCHES, THERMOSTAT, INTERCOM, TELEPHONE, ETC.

PROMOTE LANDSCAPING FROM WALL TO PROPERTY LINE (REQUIRED BY ZONING). IT IS RECOMMENDED THAT SHRUBS OR OTHER HIGH LANDSCAPING BE PLACED ALONG THE WALL FOR GROUND FLOOR OCCUPANT PRIVACY

CONCRETE PAVING

PROMOTE LANDSCAPING FROM WALL TO PROPERTY LINE (REQUIRED BY ZONING). IT IS RECOMMENDED THAT SHRUBS OR OTHER HIGH LANDSCAPING BE PLACED ALONG THE WALL FOR GROUND FLOOR OCCUPANT PRIVACY

LEGEND

INDICATES 30" WIDE EGRESS DROP-DOWN PORTION OF KITCHEN COUNTERTOP.

INDICATES 30" WIDE DROP-DOWN PORTION OF KITCHEN COUNTERTOP TO BE PROVIDED.

INDICATES T-TURN WITH DIMENSIONS AS PER ANSI A117.1 FIGURE 304.3(b).

INDICATES 5' RADIUS WITH DIMENSIONS AS PER ANSI A117.1 FIGURE 304.3(d).

STD NYC R/C BATHROOM COMPLIANT WITH APPENDIX P, 2014 NYC BC.

TYPE A H/C BATHROOM COMPLIANT WITH FHA AND SECTION 504.

NOTES APPLYING TO THE VISUALLY IMPAIRED UNIT.
 -ENTIRE SPACE IS TO BE FULLY EQUIPPED AND FUNCTIONING HANDICAP ACCESSIBLE UNIT FOR IMMEDIATE USE
 -ALL ELEMENTS OF THE STORY TO MEET HANDICAP REQUIREMENTS AND MOUNTING HEIGHTS FOR USABLE UNITS, INCLUDING BUT NOT LIMITED TO OPERATING HANDLES, DOOR KNOBS, WINDOW OPERATING HANDLES, GRAB BARS, SWITCHES, THERMOSTAT, INTERCOM, TELEPHONE, ETC.

CONCRETE SIDEWALK